

Restoring Brookmeade Park

Public Information Session Summary

Client



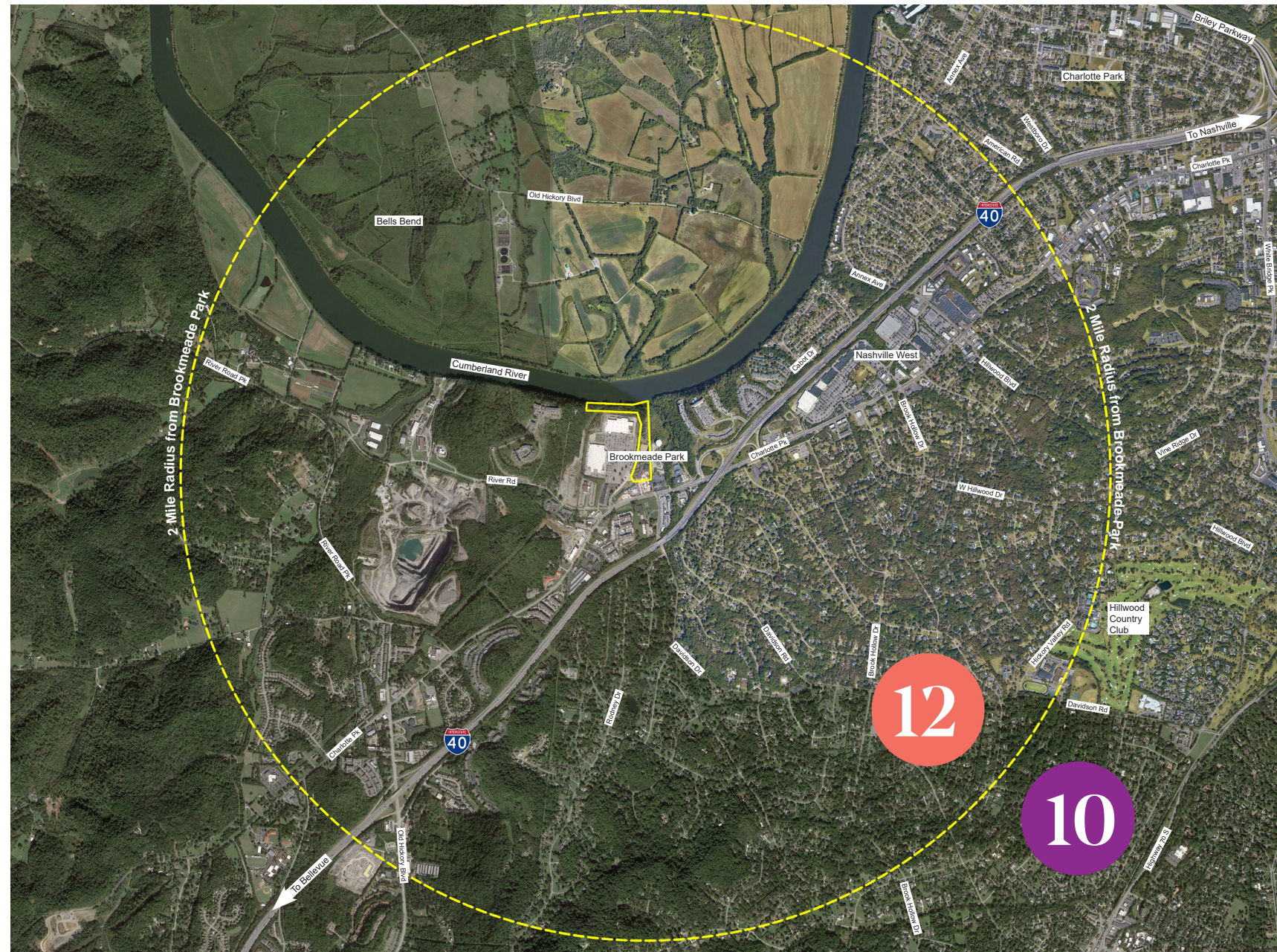
September 2023

Introduction

On the 26th of September Gresham Smith and Metro Parks hosted a public drop in information session on the restoration of Brookmeade Park. At the drop in session, the public engaged with staff members from Gresham Smith and Metro Parks on the following;

- Residence proximity to Brookmeade Park
- Project process
- Site Constraints & Opportunities
- Park activities that are important to residents
- Park activities that are important to residents

The drop in session was well attended with local media outlets in attendance and approx. over 22 members of the general public attending the session and actively engaging with staff members.



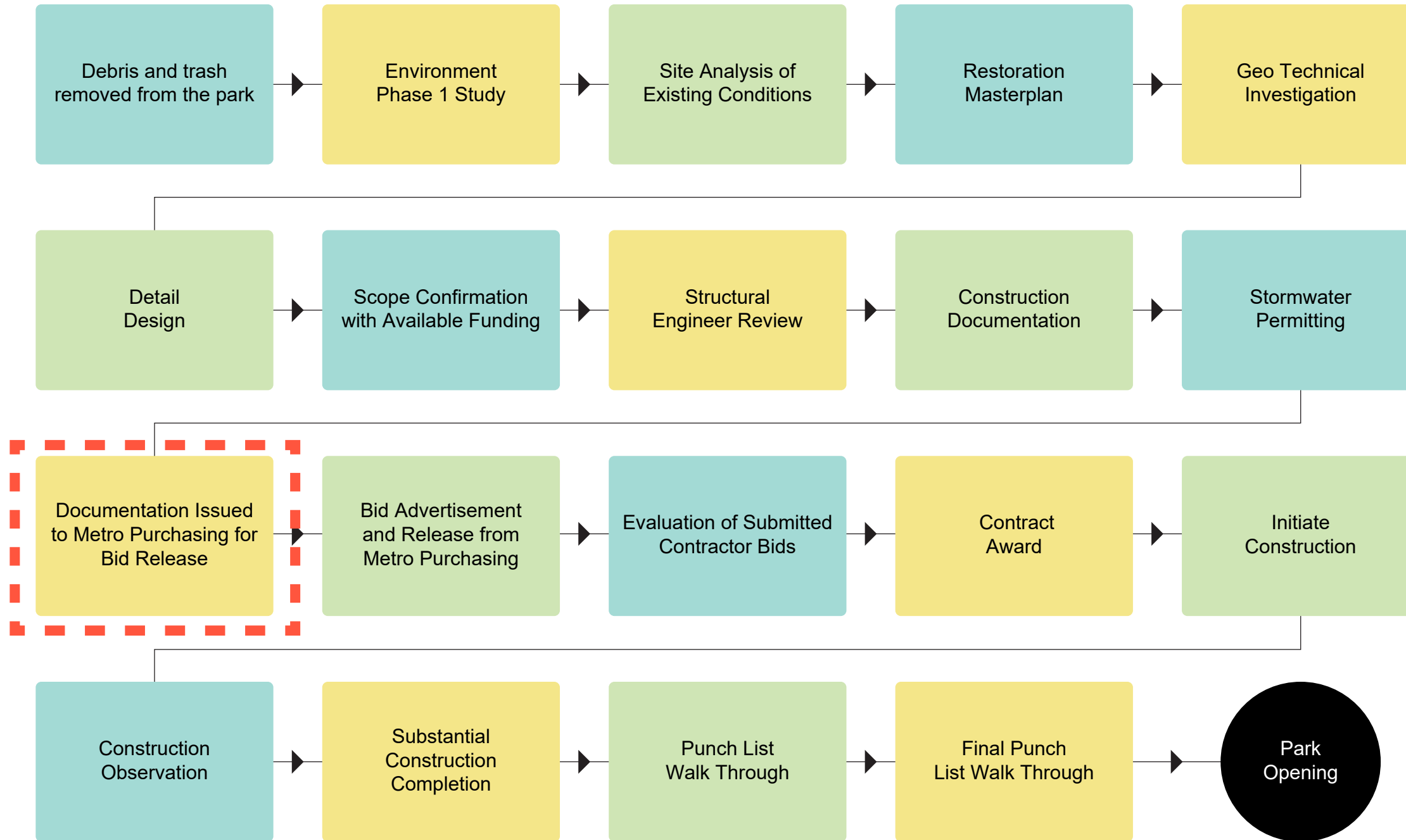
Proximity Summary

Attendees indicated on the exhibit their approx. residence location.

- 12 attendees live within the 2-mile radius of the park.
- 10 lived outside the 2-mile radius.



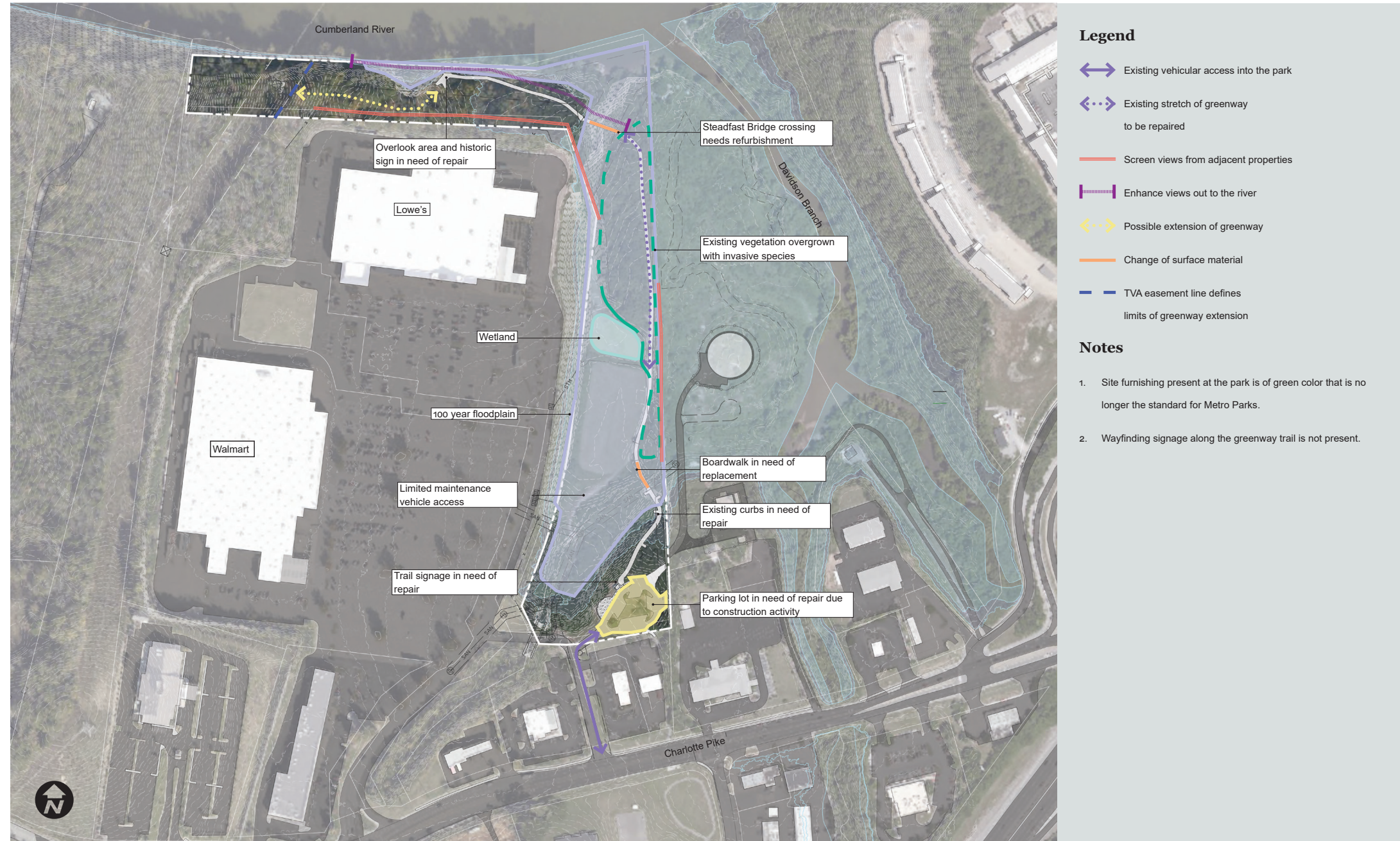
Brookmeade Park - Flowchart



Project Process

The staff outlined the multiple tasks that have been undertaken and are still to be undertaken for the safe opening of the park.

Brookmeade Park - Site Constraints & Opportunities



Site Constraints and Opportunities

The staff engaged with the attendees, outlining the existing constraints of the site and outlined the restoration opportunities to the existing park assets.

Park activities that are important to residents

Attendees were asked to place dots on the activities or add activities that are important to them.

At the end of the session the dots were calculated and recored.

Brookmeade Park - Activities Exercise | Please place a DOT under those ACTIVITIES that you believe are important.

Paddle Board/ Kayak Access	Walk/Run/Jog/ Exercise on additional PAVED Paths	Walk/Run/ Jog/Exercise on UN-PAVED Paths	Walk/Curb a dog (On-leash)	Stroll in a natural area
Stroll around art exhibits	Ride a bike on UN-PAVED Paths	Sit outside; read, people-watch, eat lunch, talk with friends (COVERED)	Sit outside; read, people-watch, eat lunch, talk with friends (UNCOVERED)	Picnic, sunbathe
Tend a community garden	Walk along a tree identification/plant trail	Walk along a history trail	Interact/play with others in a play area	Use an outdoor classroom
Exercise with outdoor fitness equipment	Interact/play with others on table games	Restrooms	Play court sports	Play a game of catch, frisbee
Play backyard games (bocce ball, horseshoe, corn-hole)	Bird watching	Disc golf	Insert your own idea	Insert your own idea
Insert your own idea	Insert your own idea	Insert your own idea	Insert your own idea	Insert your own idea
Insert your own idea	Insert your own idea	Insert your own idea	Insert your own idea	Insert your own idea

Table 1-1 Preferred Activities

Activity	total
Paddle Board/Kayak Access	21
Walk Along a History Trail	17
Walk/Run/Jog/Exercise on Additional Paved Paths	13
Disc Golf	9
Walk/Run/Jog/Exercise on Additional Un-Paved Paths	8
Exercise with Outdoor Fitness Equipment	7
Restrooms	7
Ride a Bike on Un-Paved Paths	6
Sit Outside; Read, People Watch, Eat Lunch, Talk with Friends (Covered)	6
Walk/Curb a Dog (On-Leash)	5
Stroll in a Natural Area	4
Picnic, Sunbathe	4
Use an Outdoor Classroom	3
Bird Watching	3
Play a Game of Catch, Frisbee	2
Tend a Community Garden	2
Play Backyard Games (Bocce Ball, Horseshoe, corn-hole)	2
Interact/Play with Others in a Play Area	2
Walk Along a Tree Identification/Plant Trail	1
Stroll Around Art Exhibits	0
Interact/Play with Others on Table Games	0
Sit Outside; Read, People Watch, Eat Lunch, Talk with Friends (Un-Covered)	0

Table 1-2 Added Activities by Guests

Activity	total
Pickle Ball	14
Curb Appeal (Needs to be Inviting/Attractive to the Community)	7
Keep it Safe - No Matter What	6
Too Isolated	4
Music in the Park	3
24-hour security	2
Star Parties (Telescope)	1
Security/Lighting/Patrol	1